



SANDAG Smart Growth Map Technical Update

- Determines Eligibility for SANDAG *TransNET* Smart Growth Funding:
 - Planning Grants
 - Capital Infrastructure Grants
- Competitive Process
- Cities and County
- Previous call for projects: 2009



SANDAG Smart Growth Map Technical Update

- Approved 2006
- Technical Update 2008
- SANDAG currently is performing a technical update for the 2012 call for projects
- Based on adopted community plans



SANDAG Smart Growth Map Purpose

- Encourages Multimodal Trips
- Supports Revitalization
- Improves Mobility
- Enhances Sense of Place



SANDAG Smart Growth Areas Place Types

- Metropolitan Center (Downtown)
- Urban Center
- Town Center
- Community Center
- Mixed Use Transit Corridor
- Special Use Center



SANDAG Smart Growth Areas Status Types

- “Existing/Planned” smart growth areas:
 - Capital infrastructure and planning grants
- “Potential” smart growth areas:
 - Only for planning grants



Possible Changes to the Smart Growth Concept Map

- Updated transit routes and services
- Changes in status (“Potential” to “Existing/Planned”)
- Refinements to place types
- Refinements to boundaries
- Addition or deletion of areas

Transit Routes and Stations

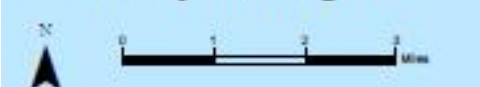
- Existing Transit & Programmed/Planned Transit (in RTP)
- Planned Transit (in RTP)
- Light/Commuter Rail Route
- Bus Rapid Transit Route
- Rapid Bus Route
- High Frequency Local Service
- Stations
 - Light/Commuter Rail
 - Bus Rapid Transit
 - Rapid Bus

Smart Growth Areas

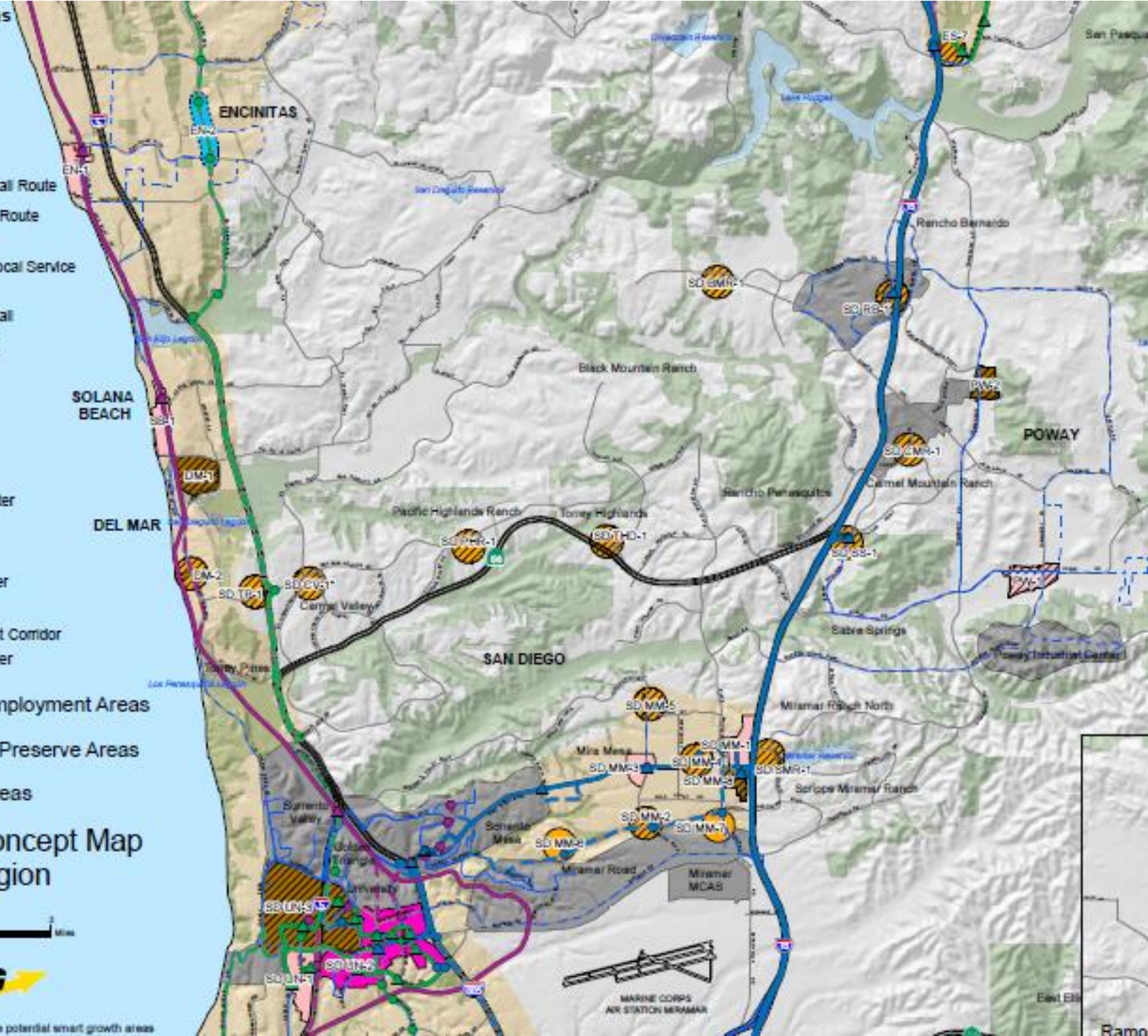
- Existing/Planned Potential
- Metropolitan Center
- Urban Center
- Town Center
- Community Center
- Rural Village
- Mixed Use Transit Corridor
- Special Use Center

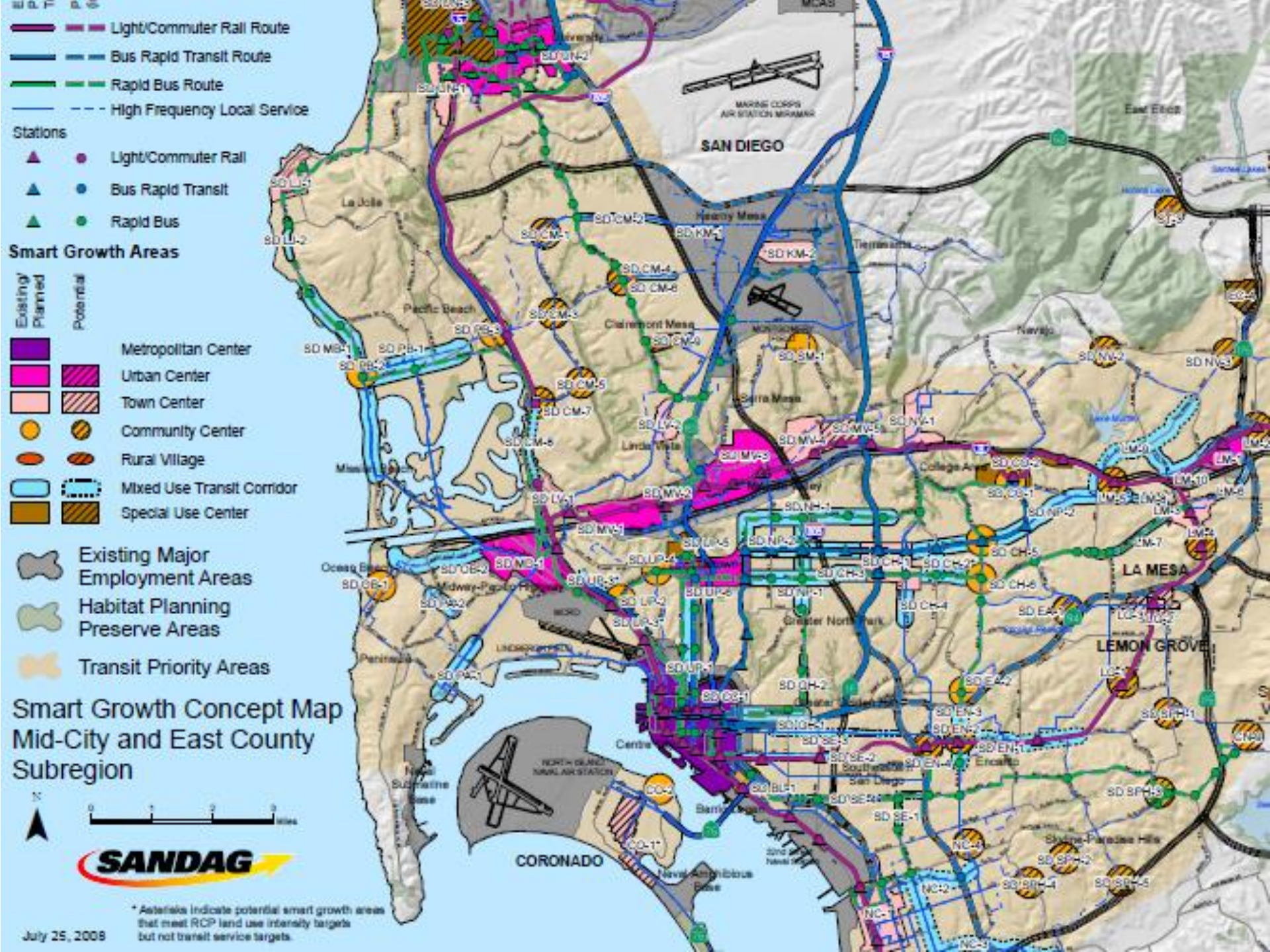
- Existing Major Employment Areas
- Habitat Planning Preserve Areas
- Transit Priority Areas

Smart Growth Concept Map North City Subregion



* Asterisks indicate potential smart growth areas





- Light/Commuter Rail Route
- Bus Rapid Transit Route
- Rapid Bus Route
- High Frequency Local Service

- Stations**
- ▲ Light/Commuter Rail
 - ▲ Bus Rapid Transit
 - ▲ Rapid Bus

- Smart Growth Areas**
- | | | |
|--|--|----------------------------|
| Existing | Potential | |
| | | Metropolitan Center |
| | | Urban Center |
| | | Town Center |
| | | Community Center |
| | | Rural Village |
| | | Mixed Use Transit Corridor |
| | | Special Use Center |

- Existing Major Employment Areas
- Habitat Planning Preserve Areas
- Transit Priority Areas

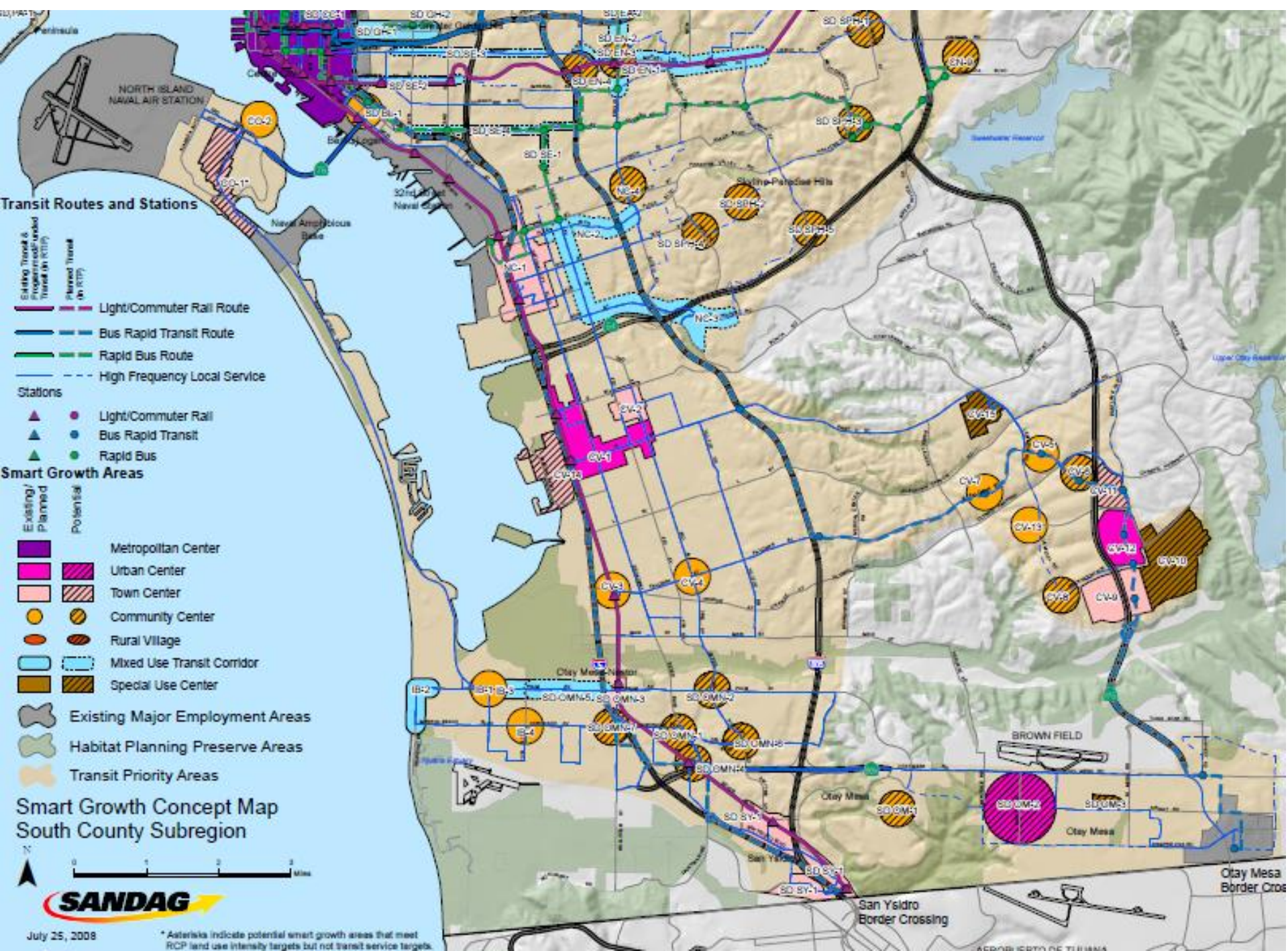
**Smart Growth Concept Map
Mid-City and East County
Subregion**

N

0 1 2 Miles

* Asterisks indicate potential smart growth areas that meet RCP land use intensity targets but not transit service targets.

July 25, 2008





Planning Grant Eligible Activities

- Land Use Plans
- Mobility Plans
- Urban Design Guidelines
- Feasibility Studies
- Zoning Changes



Planning Grant Objectives

- Land Use
 - Transit & Pedestrian Friendly
- Mobility
 - Streetscape & Multi Modal Improvements
- Implementation
 - Plan Amendments or Future Actions
- Community Participation



2009 Planning Smart Growth Grants \$1.3 Million Funding

Planning Project	Award
Market St & Euclid Av Master Plan Study	\$400,000
Imperial Commercial Mobility Study	\$400,000
Mid-City BRT Station Area Plan	\$225,000
Chollas Triangle Master Plan	\$275,000



Capital Grant Objectives

- Implement “Ready to Go” Projects
- Support Transit Users, Pedestrians, Bicyclists
- Reduce Greenhouse Gas
- Enhance Community Character
- Support Housing



2009 Capital Smart Growth Grants \$1.376 Million Funding

- Pedestrian Crossing and Traffic Calming Projects:

Capital Project	Award
Park Boulevard/Essex Street	\$224,000
Park Boulevard/City College/San Diego High	\$300,000
Fourth Avenue/Quince Street	\$233,000
4th and 5th Avenue/Nutmeg	\$619,000



SANDAG Smart Growth Map Technical Update Timeline

- Summer 2011 - City to provide input
- Fall 2011 - Updated Map
- Spring 2012 – Call for Projects



SANDAG Smart Growth Map Technical Update

- Community Planning Groups
 - Can provide suggested changes to the existing smart growth concept map
- By: August 1, 2011
- To: Assigned Community Planner
- Please explain suggestions in writing and provide specific locations on the map.