

SAN DIEGO COUNTY
REGIONAL AIRPORT AUTHORITY

P.O. BOX 82776, SAN DIEGO, CA 92138-2776
619.400.2400 WWW.SAN.ORG

Date: November 9, 2009
To: Distribution
Subject: Aircraft Noise Complaint Report – August 2009

A copy of the noise complaints received by Airport Noise Mitigation at San Diego International Airport for the month of August 2009 is submitted for your information. This report is required as a condition of the Airport Noise Variance and is submitted to local and state agencies.

This report includes:

- Aircraft Noise Complaint Log
- Aircraft Noise Complaint Callers' Location Map
- Aircraft Noise Complaint Distribution by Neighborhood
- Aircraft Noise Complaint Distribution by Household
- Aircraft Noise Complaint Distribution by Time of Day
- Aircraft Noise Complaint Distribution by Aircraft Type
- Aircraft Noise Complaint Distribution by Cause

Comparative Charts:

- Year-to-Date Aircraft Noise Complaint Statistics by Neighborhood
- Monthly Aircraft Noise Complaints (2005 – August 2009)
- Annual Aircraft Noise Complaints (2005 – August 2009)

Threats against aircraft are taken seriously and will be reported to the appropriate federal law enforcement agency. Complaints containing profanity or insinuation of threat to Airport Authority or affiliated staff will not be included in this log.



Dan Frazee
Director, Airport Noise Mitigation

Enclosures

DF/rja



SAN DIEGO
INTERNATIONAL
AIRPORT

Aircraft Noise Complaint Report
November 9, 2009
Page Two

Distribution:

Patricia Delgado, Aeromexico
Greg Trinkaus, Airborne Express
James Mayer, Air Tran Airlines
Danny Flores, Alaska Airlines
Phil Delk, Allegiant Air
Lynn Silva, America West Airlines/US Airways
Tina Moman, American Airlines
Steve Terry, American Eagle
John Dickman, BAX Global
Jean Buggs, Continental Airlines
Jeff Rasor, Delta Air Lines
Bobbie Schlindler, Federal Express
Eric Srangsrivong, Frontier Airlines
Janet Nix, Hawaiian Airlines
Brian Towle, Jet Blue Airways
Roy Gourley, SkyWest Airlines
Cheryl Black, Southwest Airlines
Darwin Schussler, Sun Country
Al Turner, United Airlines
Randy Churchward, United Parcel Service
Tim Kennell, UPS-Supply Change Solution
Sean Mahoney, United States Coast Guard
Catrice Miller, Virgin America
Linda Adams, SOCAL TRACON
Jeff Tittle, Air Traffic Manager, Lindbergh Tower
Betsy Eskridge, Division of Aeronautics (CalTrans)
Airport Noise Advisory Committee



Airport Noise Mitigation Aircraft Noise Complaint Log August 2009

Event Date & Time Neighborhood City, State, Zip Code	Comments	Resolution Comments
8/01/2009 0145L Famosa San Diego, CA, 92107	Hi, at 1:30 in the morning, someone, I don't know, a plane, circling around and around, and then at 1:45 a.m. some big jet took off. So, please make sure that they are fined. Thank you so much, and I would like a call to tell me what plane that was that took off. And it's Saturday morning at about 1:45 in the morning.	Caller was informed that a curfew violation occurred. Explained the violation review procedures.
8/01/2009 0700L Ocean Beach San Diego, CA, 92107	Yes, it is August 1st and the planes are going over really low and really loud. It's now seven o'clock in the morning and it's been going on for a few minutes now. It's really loud. Thank you, bye.	Caller did not request a call back. The aircraft followed all prescribed departure procedures.
8/01/2009 0940L Ocean Beach San Diego, CA, 92107	It's now about nine forty when this awful noise, I mean just terrible, I thought it was going to crash it was so loud and so awful. I don't know what's going on, but it certainly is scary. As I understand, the planes are supposed to go follow the river, and we're a probably good half to three-quarters of a mile south of the river. So, they're not going to where they're supposed to go and they're making too darn much noise, bye.	Caller did not request a call back. The aircraft flew the prescribed runway heading departure.
8/05/2009 0443L Mt. Hope San Diego, CA, 92102	We are just off of Market St near the 805 freeway. It is 4:43 a.m. on Wednesday morning and I had called and placed a complaint and followed up with the FAA about the FedEx that had flown really low a couple weeks ago, I'm sure this is probably the same flight. It flew very low, woke me up, not as low as they did last time. It's Wednesday morning. If someone could give me a call back, I'd appreciate it, thank you.	Caller was informed of Air Traffic Control procedures and that the operation followed all prescribed arrival procedures.



<p>8/05/2009 0613L Loma Portal San Diego, CA, 92106</p>	<p>Good morning, it's Wednesday morning August 5th, and I was woken up by a departure, I believe a departure, out of Lindbergh Field, to the west, at 6:13 a.m. during curfew hours. I'm looking at the Airport Monitor, but it doesn't look like I see the diagram of the area. Thank you, bye.</p>	<p>Caller did not request a call back. Caller was informed that the aircraft was a missed approach on Runway 27. Arrivals are permitted twenty-four hours a day.</p>
<p>8/05/2009 0620L Loma Portal San Diego, CA, 92106</p>	<p>Good morning, I've got your Flight Tracker working now, and it looks like it was a go-around during Curfew hours, so there's no reason to call me back, however, I'd still like to register it as a noise complaint. Thank you very much, bye.</p>	<p>Caller did not request a call back. Caller was informed that the aircraft was a missed approach on Runway 27. Arrivals are permitted twenty-four hours a day.</p>
<p>8/06/2009 2133L Pacific Beach San Diego, CA, 92109</p>	<p>Hi, it's August 6th and at 9:33 p.m. they sent a commercial jet off over my house and I must say, I'm going to have to look at the computer tomorrow, because that was one weird angle. Instead of circling around and going east, it basically cut across Mission Bay and headed kind of northeast low and loud, very loud. Even with clouds up there, it was very loud and I could see it very easily. So, like I said before, tell them to stop doing that. That is not normal, not in the history of San Diego. This is only a recent thing. Good-bye.</p>	<p>Caller did not request a call back. The aircraft followed all prescribed departure procedures.</p>
<p>8/07/2009 2109L South Park San Diego, CA, 92102</p>	<p>At about 9:09 p.m. tonight, the worst airplane noise I have ever heard ripped through my house. I've lived in Ocean Beach, and now in South Park, and expect a certain amount of noise, however, what I heard tonight was extremely excessive. I saw the noise on my baby's monitor and it was as bad as a toddler screaming at top volume into the monitor, max capacity on the monitor. I demand that this airline be identified and reprimanded for the noise pollution and hearing damage they have caused.</p>	<p>Caller was informed that the aircraft, a Northwest Airlines Boeing 757, followed all prescribed arrival procedures.</p>



8/08/2009 0710L
Point Loma
San Diego, CA, 92107

Hi, my husband and I reside in the south end of Point Loma, and I just read the local paper, although I really didn't need to, we've clearly noticed the change in airport noise in the past couple days, and this letter that we have not been sent, which the airport says that we will be sent, states that this project will begin on August 10th. It's not even August 10th and we have not received this courtesy letter and we specifically bought this house one year ago after strict analysis of airport noise, as this is a factor that would have completely devoid our wanting to purchase this house. I'd like someone to call me back. If this is temporary, that's fine. There's a letter in the local paper indicating that this might not be temporary and if that's the case, I am beyond furious and I would like to get on whatever committees possible to have direct communication with this future planning.

Caller was informed of Air Traffic Control procedures and that the aircraft followed all prescribed departure procedures.

8/09/2009 @ 0800L
Point Loma
San Diego, CA, 92107

Yes, reading in the Beacon paper I've realized that there's going to be a lot of noise in our neighborhood and it may go on a long time. I'm trying to find out more information, and if you want the various times, starting on Friday through today, we're expecting this to go on for a long time, we can hear about every aircraft that goes through. We look on your website, most of your sound things seem to be from 2003 when all your variances were done, and if we rotate through, it looks like we may be inside the 65 decibel range if you start monitoring the actual noises. So, we'd like a lot more info because we were supposed to have gotten a notice, which we have not received, and we're not happy about the whole situation. Thank you, bye.

Caller was informed of Air Traffic Control procedures and that the aircraft followed all prescribed departure procedures.



8/10/2009 @ 0650L
Point Loma
San Diego, CA, 92107

Hey, we found your flier announcing the noise, it still started earlier than you said, and this morning we've heard eight aircraft in only 20 minutes, starting at six thirty. That is more, way more than a slight increase. We definitely want someone to call us back and talk to us about what exactly the plan is. I am prone to migraine headaches, I have a four year old son who is hypersensitive to noise, with Sensory Integration Disorder, and my husband just simply plain hates airplane noise. We purchased this house one year ago after very thoroughly looking at airplane flight paths, it was one of our very top priorities. So, we absolutely want to know what the plan is, and this is more than a small deal. If it's temporary, that's fine, we'll figure out what we'll do for the year or two, but, if this is something lifelong, we need to have some serious conversations.

Caller was informed of Air Traffic Control procedures and that no changes have been made to the flight paths.

8/10/2009 @ 0846L
Loma Portal
San Diego, CA, 92106

I have been a Point Loma resident since 1968 and graduated from Point Loma High School, so I am very familiar with the air traffic in our area. Recently my neighbors and I have noticed a dramatic increase in the noise level over our residences, as it seems the takeoff flight plan has been altered and moved to the south. In the past, the normal takeoff route was more to the north out toward the channel and over Mission Beach. The FAA PEBLE-3 SID states a takeoff course of 290 degrees after the plane leaves the runway, which would mean a slight right turn after takeoff toward Mission Beach. I have watched takeoffs from my deck, which has a view of the airport runways, and many planes are not following the course specified by the FAA of 290 degrees. Instead, they are actually turning the opposite direction towards Ocean Beach and Sunset Cliffs. Please give me some input on why this is happening, thank you.

Caller was informed of Air Traffic Control procedures and that there are two SIDs for Lindbergh Field. The aircraft are following all prescribed procedures.



8/10/2009 @ 2350L
Uptown
San Diego, CA, 92101

I'm complaining because it seems lately that the airport landings have been going on constantly all night. It keeps me up at night, and wakes me up. The other night I was up between 2:30 to 4:00 a.m. and I like heard like four planes land. I thought it was subject to regulation and that it's supposed to stop at ten? It hasn't been, it's just been non-stop, and because of heat, I have double-paned windows, but unfortunately the airport doesn't pay for air conditioning, so I have to keep them open at night, so it does nothing for the noise.

Caller was informed of the Airport Use Regulations, Time of Day Restrictions, and that arrivals are permitted twenty-four hours a day.

8/13/2009 @ 0700L
Point Loma
San Diego, CA, 92107

It's Thursday morning, August 13th, it's not even seven o'clock in the morning, I've been up since the airplanes are flying over my house. I've got a complaint about the runway change. When I purchased this house the airplanes weren't flying overhead. I could have got it for a whole lot cheaper, and I could have got a bigger, nicer house under the runway, which I didn't get because I didn't want to live under the airport. So, I'm tired, I went to bed at midnight and I'm up before seven o'clock, I don't have to be to work till ten. I'm going to call you every day and let you know this is a problem, and the runway direction didn't change with the construction, so why do the planes have to fly over Dana Middle School? I don't understand, what else can I tell you, I'm talking to myself on a recorder, where are you? I'm up at seven o'clock listening to the airplanes, how come you're not?

Caller lives one-half mile south of the runway centerline. Caller was informed that the aircraft flew the prescribed runway heading departure.

8/13/2009 @ 0708L
Point Loma
San Diego, CA, 92107

Hi, I've noticed lately, that smaller planes are flying directly over our house. We bought this house about two years ago, we were not in the flight pattern. So, there's some problems going on here, other than your temporary thing. It happened at 7:08 a.m. this morning, August 13th, and it was a smaller aircraft is going directly over our house. So, I'd like someone to call me back and explain why planes are going directly over my house, thank you.

Caller was informed of Air Traffic Control procedures and that the general aviation aircraft from Montgomery Field followed all prescribed procedures.

8/15/2009 @ 0442L
Loma Portal
San Diego, CA, 92106

Good morning, I'd like to register a noise complaint. I was woken up by a jet departure to the west out of San Diego International Airport during curfew hours at about 4:42 a.m. on Saturday morning, August 15th. Since this was during curfew hours, please give me a call, thanks, bye.

Caller was informed that the operation was a missed approach on Runway 27. Arrivals are permitted twenty-four hours a day.



8/15/2009 @ 2122L
Pacific Beach
San Diego, CA, 92109

Hi, it's Saturday, August 15th, at 9:22 p.m., and I just called to complain that the usual weekend jet is going over. It's early tonight, and I'm sure there are going to be a couple more later tonight, and it's always on the weekends. I must thank the military for not sending the four jets that flew over the stadium tonight before the Charger game, I must thank them for flying up over the cross. Several times they've flown directly over my house and scared the hell out of everybody in the neighborhood, cause you don't hear them coming and they're always really low. At least this time they went over someone else's house and scared them to death. So, I may call back again tonight, I may not, depending on how good the Departure controller is. Bye.

Caller did not request a call back. The aircraft followed all prescribed departure procedures.

8/18/2009 @ 0657L
Ocean Beach
San Diego, CA, 92107

I'm calling to complain about the noise level during the past week or 10 days, ending today, August 18th, and the planes have been very noisy and very low. Just now at about 6:57 this morning it was so loud that the whole house shook. In other words, it's either very low or something's going on. The planes are going over very low. This has happened several times lately that the house has trembled, and this is a very solid, big house, so it's very scary. As I understand, the planes are supposed to follow the San Diego River, and I'm probably 6 to 10 blocks south of the river. So, they're not doing a very good job of following their route. At any rate, you don't have to call me back, I'll complain again probably. I haven't complained in a few weeks now, but it's very, very scary and unpleasant. Thank you, bye.

Caller did not request a call back. The aircraft, an Airbus A300-600, followed all prescribed departure procedures.

8/18/2009 @ 0715L
Point Loma
San Diego, CA, 92107

Hi, your office did call me back regarding my first complaint, however, I'm complaining again because there are two small planes that fly over our home, which nobody is supposed to be flying over our home, at 7:15 in the morning. It is consistent now that they take off and fly over our house in Point Loma at around 7:15. Can you let me know what's going on with that, and why that they are pretty consistent when they're flying over, and who they are? I would appreciate it, thanks.

Caller was informed of Air Traffic Control procedures and the aircraft, a Cessna C208, a non-runway heading departure, was following all prescribed departure procedures.

8/19/2009 @ 0640L
Point Loma
San Diego, CA, 92107

It's before 7:00 a.m., I worked until 10:30 p.m. last night, and it's early. I didn't want to be up, but I am.

Caller did not request a call back. The aircraft followed all prescribed departure procedures.



8/19/2009 @ 0700L
Point Loma
San Diego, CA, 92107

This is my second call of the day. Are you having a marathon? It's like every three seconds there's a plane going overhead. I've lived here eight years, and it's been nice and peaceful, and I want it back.

Caller did not request a call back. The aircraft followed all prescribed departure procedures.

8/21/2009 @ 0640L
Point Loma
San Diego, CA, 92107

My opportunity to catch up on sleep after a very tough and grueling week, and waking up at six thirty every day. Could I get some extra sleep? No, at 6:30 a.m. the planes are taking off overhead. The runway did not move, why are the planes flying over my house? Get them back on course. I'm going to keep calling you until you do.

Caller lives one-half mile south of the runway centerline. The aircraft flew the prescribed runway heading departure.

8/21/2009 @ 1730L
Point Loma
San Diego, CA, 92107

It's 5:30 p.m., Friday night, I'm trying to watch the news and I can't hear it because the planes are flying where they're not supposed to be. You need to stop it.

Caller lives one-half mile south of the runway centerline. The aircraft flew the prescribed runway heading departure.

8/22/2009 @ 0639L
Point Loma
San Diego, CA, 92107

It's Saturday, August 22nd, and it's 6:39 a.m. and planes are already flying, they've already woken me up. It's the one day that I can sleep in. I have two jobs, I work mornings and evenings. I bought this house because it wasn't in the flight path. I could have bought a bigger, cheaper house under the flight path, but I didn't want that one. I lived under the flight path, I lived on Voltaire Street, I was fine with it. I worked in aerospace for 20 years, I don't any more, and I don't want the planes flying over my house. I don't understand why you can't fix it.

Caller lives one-half mile south of the runway centerline. The aircraft flew the prescribed runway heading departure.

8/24/2009 @ 0700L
Point Loma
San Diego, CA, 92107

I'm awake again, earlier than I wanted to be awake. The runway hasn't moved, the airplanes have. There's no reason for it. Please change it.

Caller did not request a call back. The aircraft flew the prescribed runway heading departure.

8/24/2009 @ 2105L
South Park
San Diego, CA, 92104

At 9:05 p.m. on August 24th two aircraft came, what I believe you call your short approach, maybe thirty seconds apart, very low, very noisy. I measured 90 decibels of sound in my living room, and I hope this is not a trend to the future. Thank you.

Caller did not request a call back. The aircraft followed all prescribed arrival procedures.

8/25/2009 @ 0630L
Point Loma
San Diego, CA, 92107

It's 6:30 in the morning and the planes are already taking off. I thought they weren't supposed to take off until 6:30? I want something done, either change them back to the runway pattern that they were flying on, or the airport can pay for my mortgage and taxes while I'm up at 6:30 and not being able to function well.

Caller did not request a call back. The aircraft followed all prescribed procedures.

8/25/2009 @ 1010L
La Jolla
San Diego, CA, 92037

My complaint has to do with the helicopters over the house from early in the morning until late at night, 11:00 p.m., flying very low, sounding like they're going to come right on the house. The noise has increased significantly this summer and I want to know what I can do as a citizen to abate this noise, it's unbelievable. Please call me, I request help with addressing this, or becoming part of a group that is addressing this. Thank you for your time and effort in helping me, good bye.

Caller was informed of Air Traffic Control procedures. Caller was referred to the FAA.

8/26/2009 @ 0930L
Point Loma
San Diego, CA, 92106

Recently we have noticed increased noise where we live out on the point in Point Loma. The planes are flying further south, and we bought in an expensive area to avoid that. Please get it corrected.

Caller was informed of Air Traffic Control procedures and that no changes have been made to the flight paths.

8/27/2009 @ 1210L
Golden Hill
San Diego, CA, 92102

Hi, I'm calling about the noise, it's just getting worse with the airplane, you know, we're sleeping, we're on the phone, we have to wait till the plane passes by, and I need to complain. Can you please call me? Thank you.

Caller was informed of Air Traffic Control procedures and that the aircraft followed all prescribed arrival procedures.



8/29/2009 @ 2241L
Pacific Beach
San Diego, CA, 92109

It's August 29th and at 10:41 p.m., as usual, they sent a plane low over this house. Now, you guys got to understand that when I have to turn the TV up because I can't hear the program, because the jet is so low and so loud, it interferes with the quality of my life. And until the last couple of years, no jet was sent over this house. So, I don't understand if they're trying to save gas, or whether the stupid Departure Control is doing this. You know, planes go down in the first few minutes after takeoff, and you got to remember, if one of these planes go down, they're going to wipe out a lot of houses, so have them go out over the ocean a little farther, climb a little higher, and then turn back over the city. This plane tonight, go look at him on the computer, you'll see what I'm talking about. It's hot, it's clear, and it was very loud, and it was low. So, I don't appreciate it, and I think it's a hazard, not only to my nerves but to safety. This is totally uncalled for. It should have gone further north at a higher altitude. Wouldn't have spent that much gas. Anyway, as usual, it's always on the weekend that somebody does this, and it's always after ten at night. Thank you, bye.

Caller did not request a call back. The aircraft followed all prescribed departure procedures.

8/30/2009 @ 0640L
Point Loma
San Diego, CA, 92107

It's Sunday morning, I was up late last night, I had a little bit of time to sleep today before I went to work, and that's not happening. I got your insulting letter, I'll address that later.

Caller did not request a call back. The aircraft followed all prescribed departure procedures.



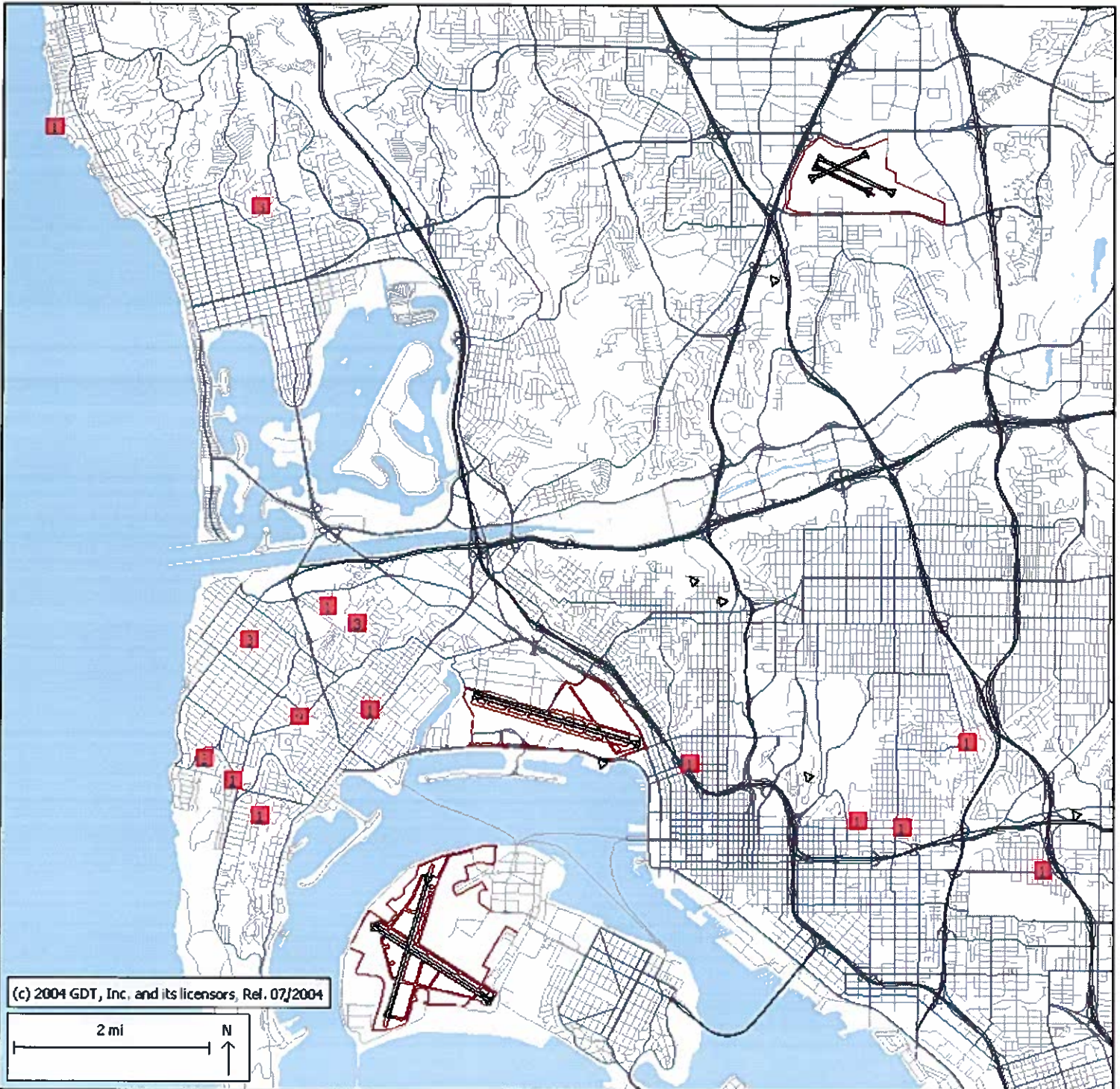


August 2009

Aircraft Noise Complaint Caller's Location in relation to
San Diego International Airport (SDIA)
15 Households; 32 Complaints



SAN DIEGO
INTERNATIONAL
AIRPORT



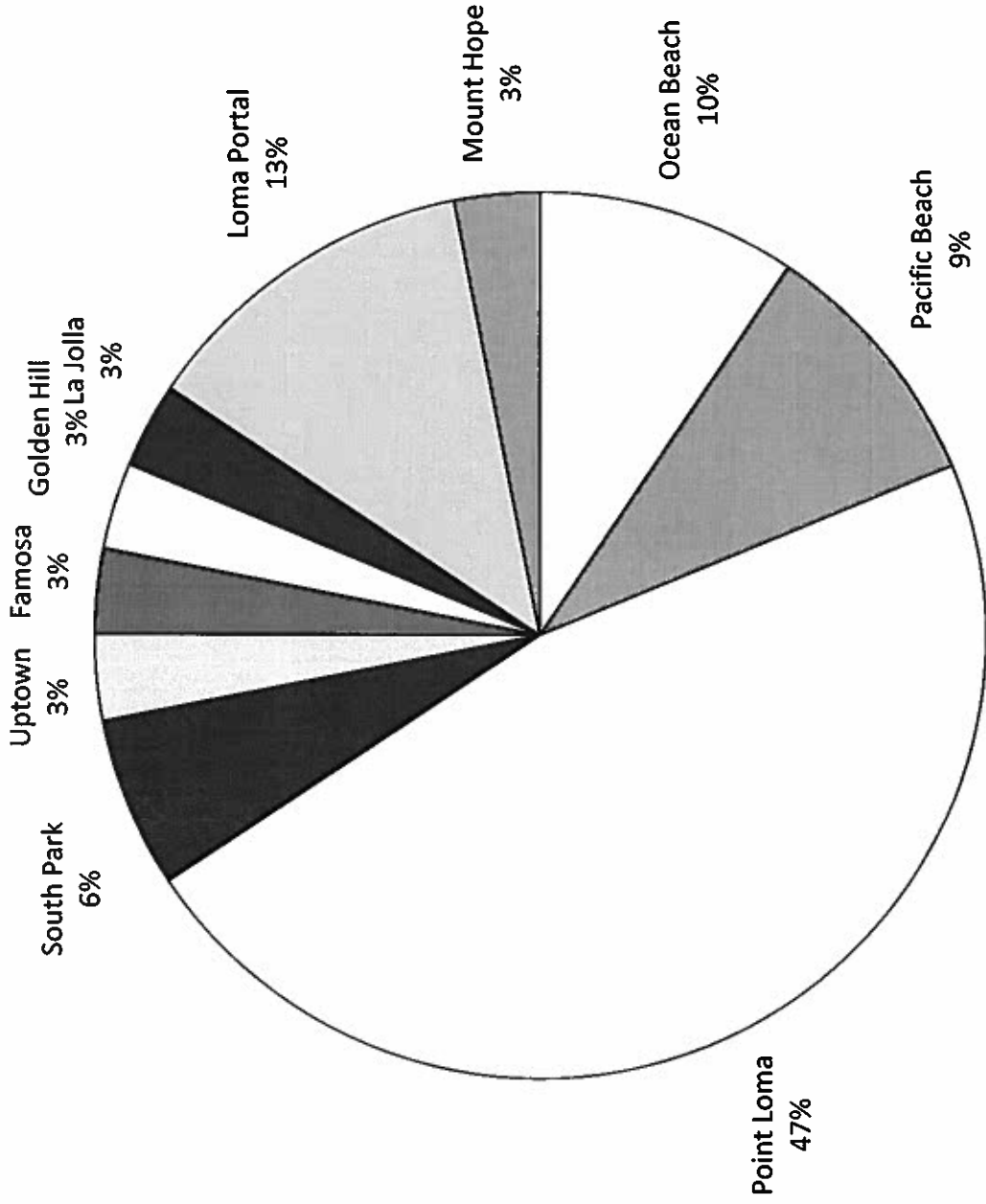
Aircraft Noise Complaint Distribution by Neighborhood



SAN DIEGO
INTERNATIONAL
AIRPORT

August 2009

TOTAL CALLS: 32



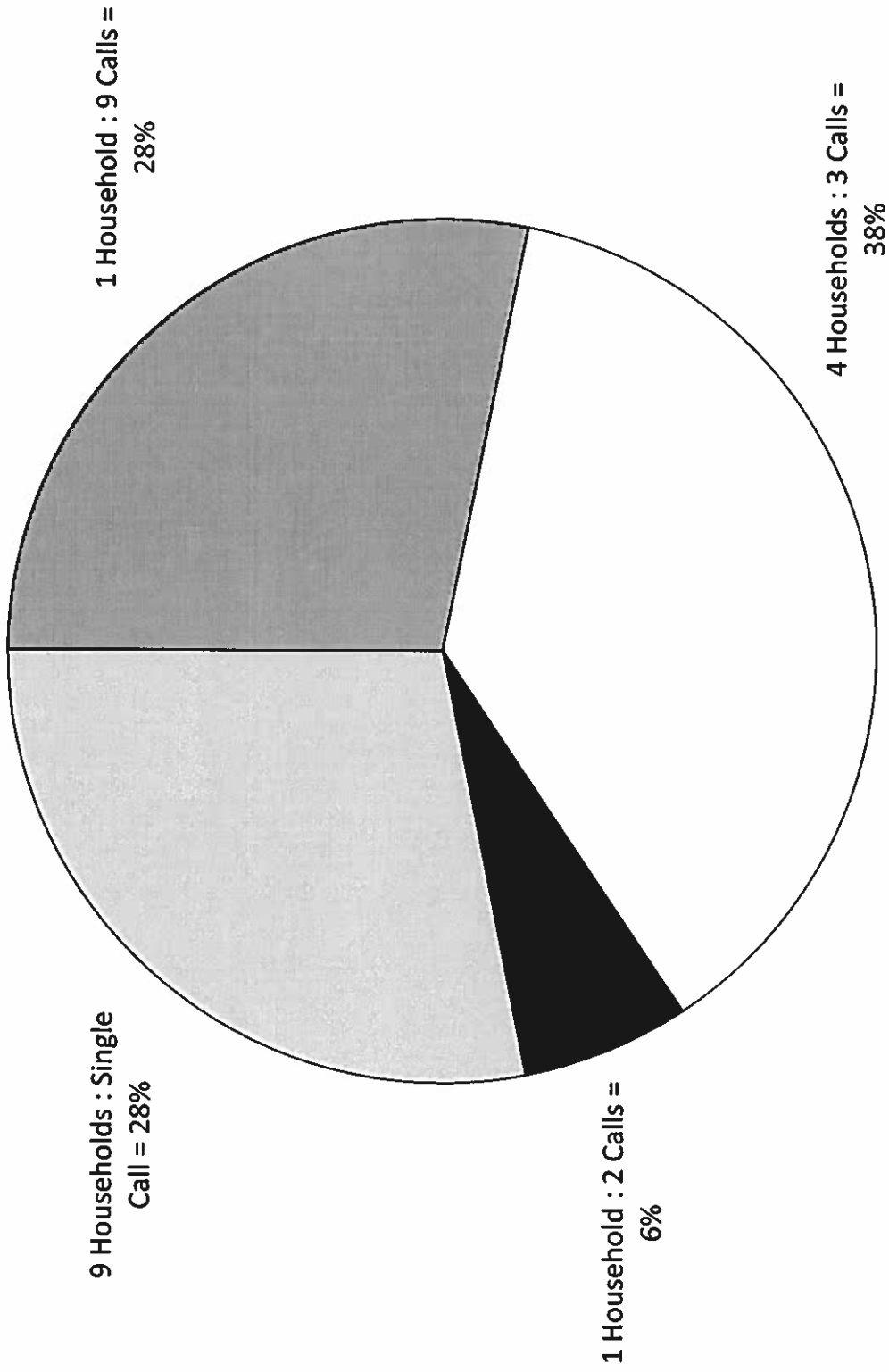
Aircraft Noise Complaint Distribution by Household



SAN DIEGO
INTERNATIONAL
AIRPORT

August 2009

TOTAL CALLS: 32



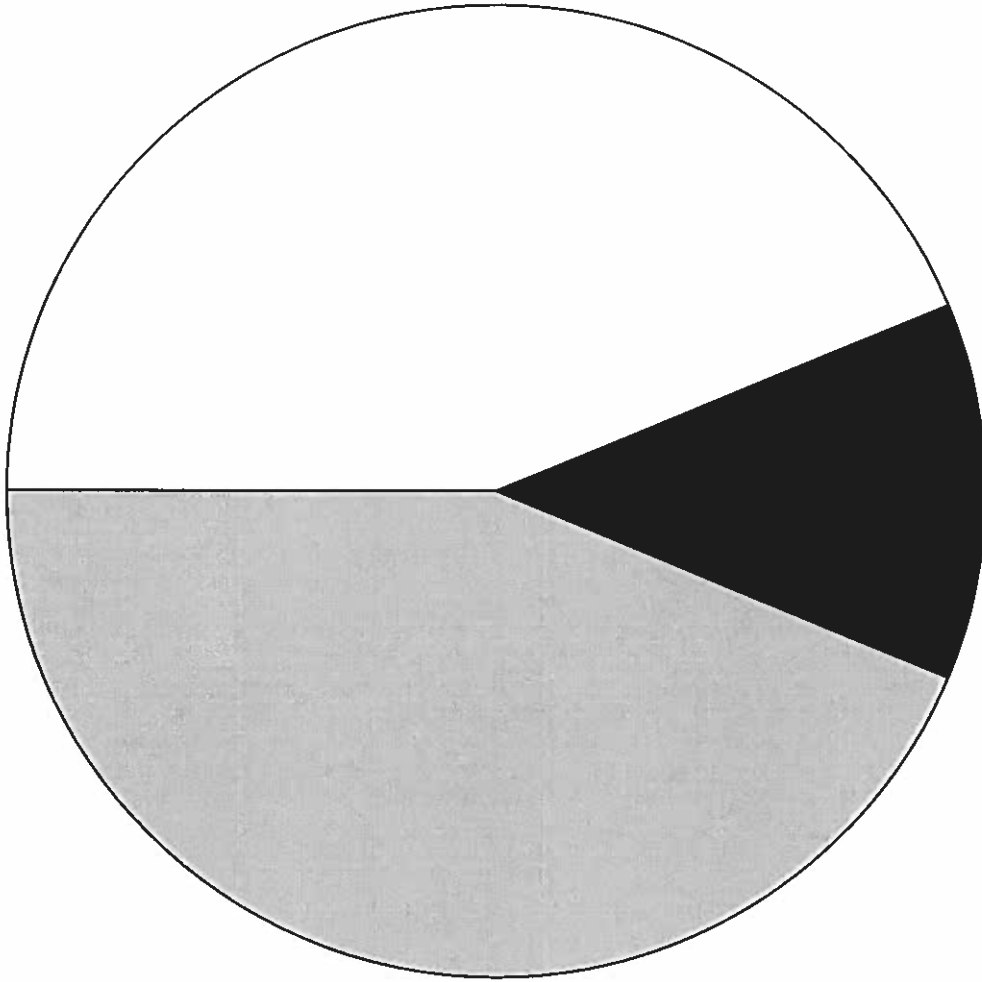
Aircraft Noise Complaint Distribution by Time of Day



SAN DIEGO
INTERNATIONAL
AIRPORT

August 2009

TOTAL CALLS: 32



10:00 p.m. - 6:59 a.m. : 14
Calls = 44%

7:00 a.m. - 6:59 p.m. : 14
Calls = 44%

7:00 p.m. - 9:59 p.m. : 4
Calls = 12%

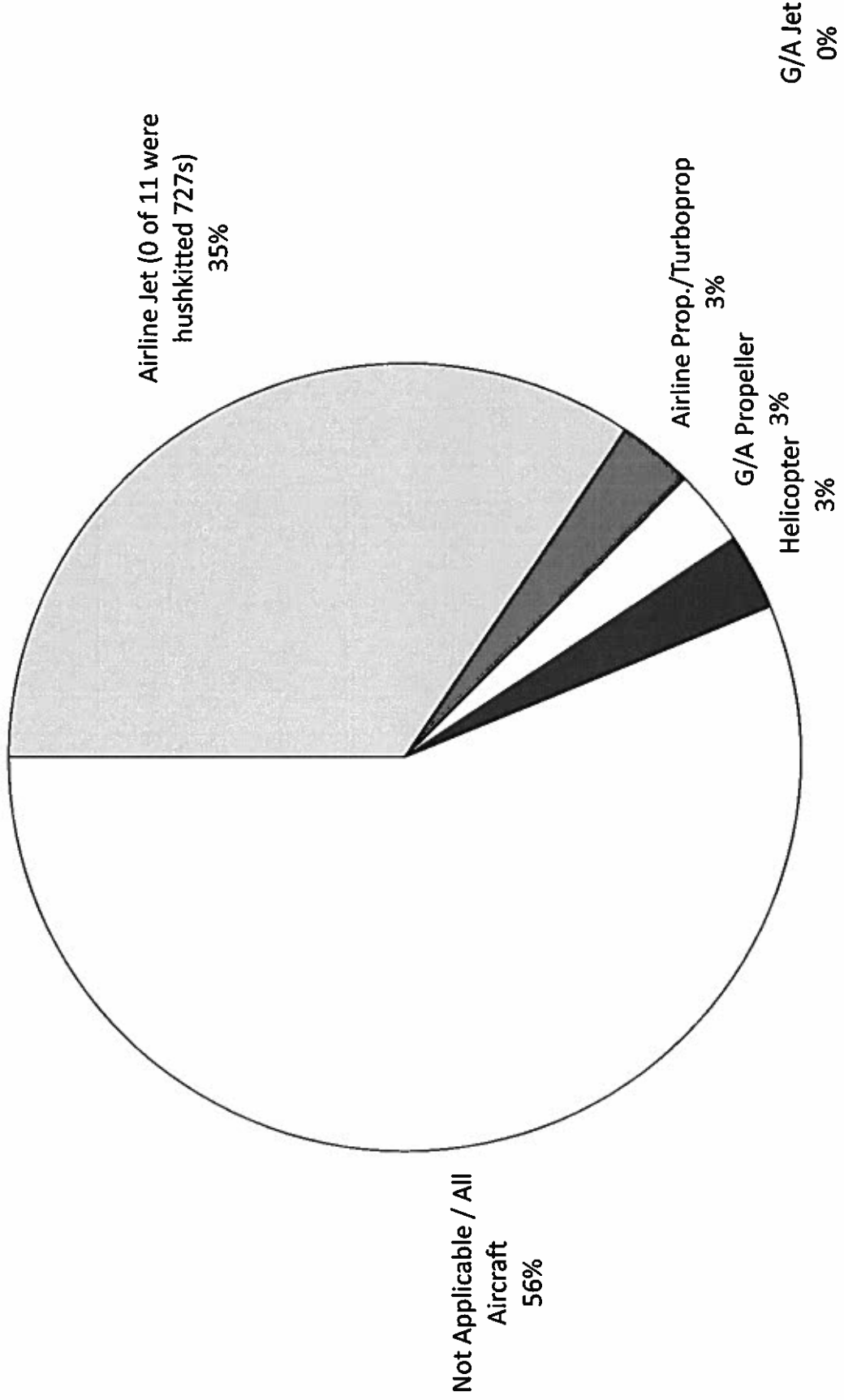
Aircraft Noise Complaint Distribution by Aircraft Type



SAN DIEGO
INTERNATIONAL
AIRPORT

August 2009

TOTAL CALLS: 32



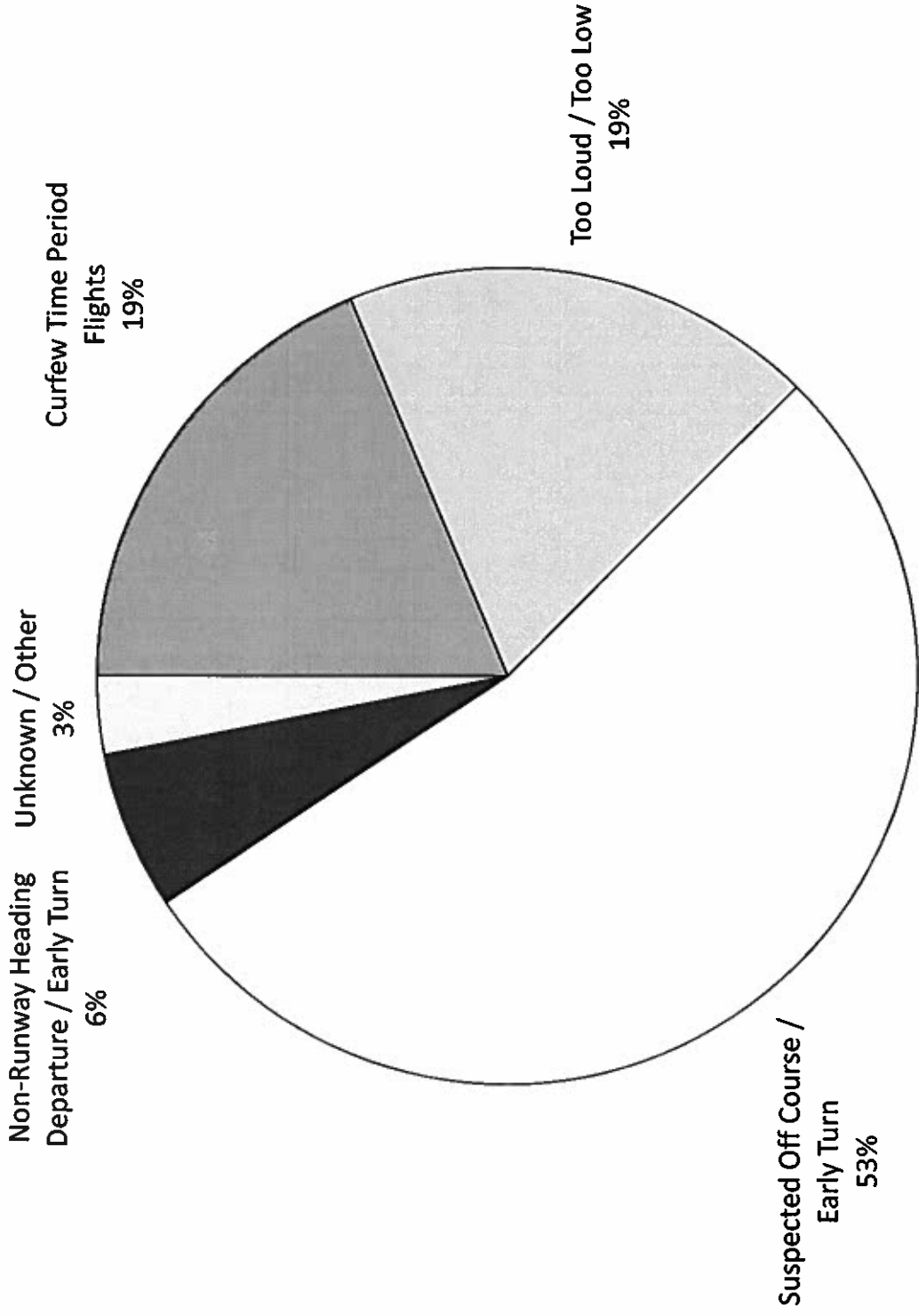
Aircraft Noise Complaint Distribution by Cause



SAN DIEGO
INTERNATIONAL
AIRPORT

August 2009

TOTAL CALLS: 32



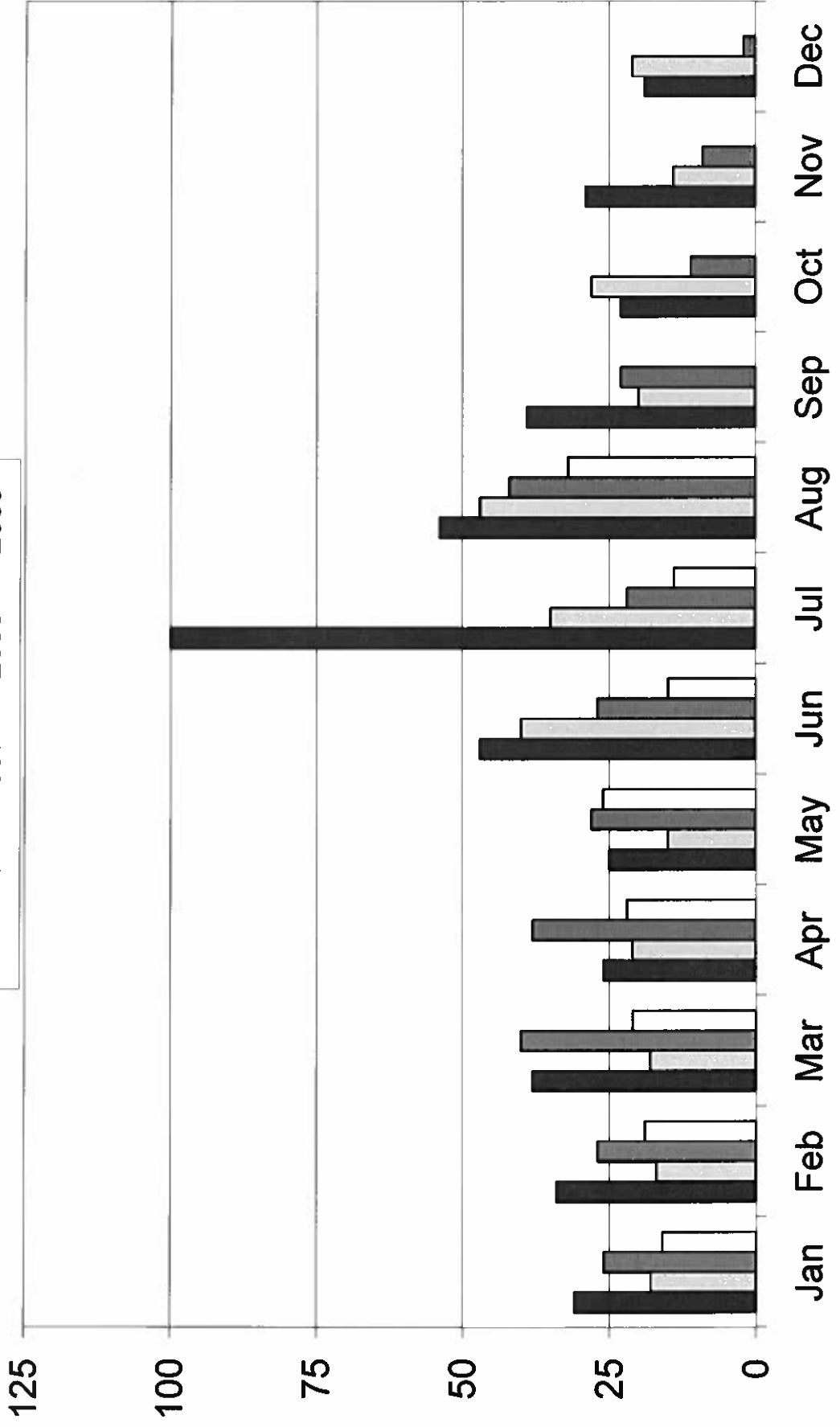
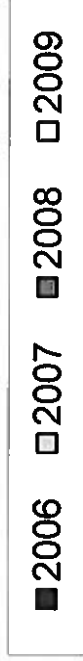
**Aircraft Noise Complaint Distribution By Neighborhood
San Diego International Airport
Summary of Aircraft Noise Complaints - 2009**

NEIGHBORHOOD	JAN	FEB	MAR	APR	MAY	JUN	JUL	AUG	SEP	OCT	NOV	DEC	TOTAL
Bay Park													0
Bonita													0
Chollas Creek		1											1
Chula Vista			1			1							2
Clairemont													0
County of S.D.													0
Coronado													0
Del Cerro				1									1
Downtown S.D.	1					1							2
El Cajon													0
Encanto/Lomita													0
Famosa			1	2	3			1					7
Golden Hill			1		1			1					3
Hillcrest													0
La Jolla								1					1
Lakeside													0
La Mesa													0
Lemon Grove													0
Liberty Station													0
Loma Portal	5	1	6	11	16	2	6	4					51
Middletown													0
Midway													0
Mission Beach						2	1						3
Mission Hills	4					1							5
Mount Hope							1	1					2
Mountain View													0
Normal Heights													0
North Park													0
Ocean Beach	1	4	3		2	4	1	3					18
Pacific Beach			2	4	3	1	2	3					15
Paradise Hills				1									1
Point Loma	3	13	7	3	1	2	3	15					47
Rolando	1												1
South Park								2					2
Spring Valley						1							1
Talmadge													0
University City													0
University Heights	1												1
Uptown								1					1
TOTAL	16	19	21	22	26	15	14	32	0	0	0	0	165

Monthly Aircraft Noise Complaints



2006 – August 2009



Annual Aircraft Noise Complaints



2005 – 2009 (August)

