



15 June 2017

**Honorable Council Member Lorie Zapf, San Diego Council District 2
City Administration Building, 202 C Street, 10th Floor, San Diego, California 92101**

And

**San Diego Housing Commission (SDHC)
1122 Broadway, Suite 300, San Diego, California 92101**

RE: Affordable / Work Force Housing in the Peninsula Community

Dear Council Member Zapf and the SDHC:

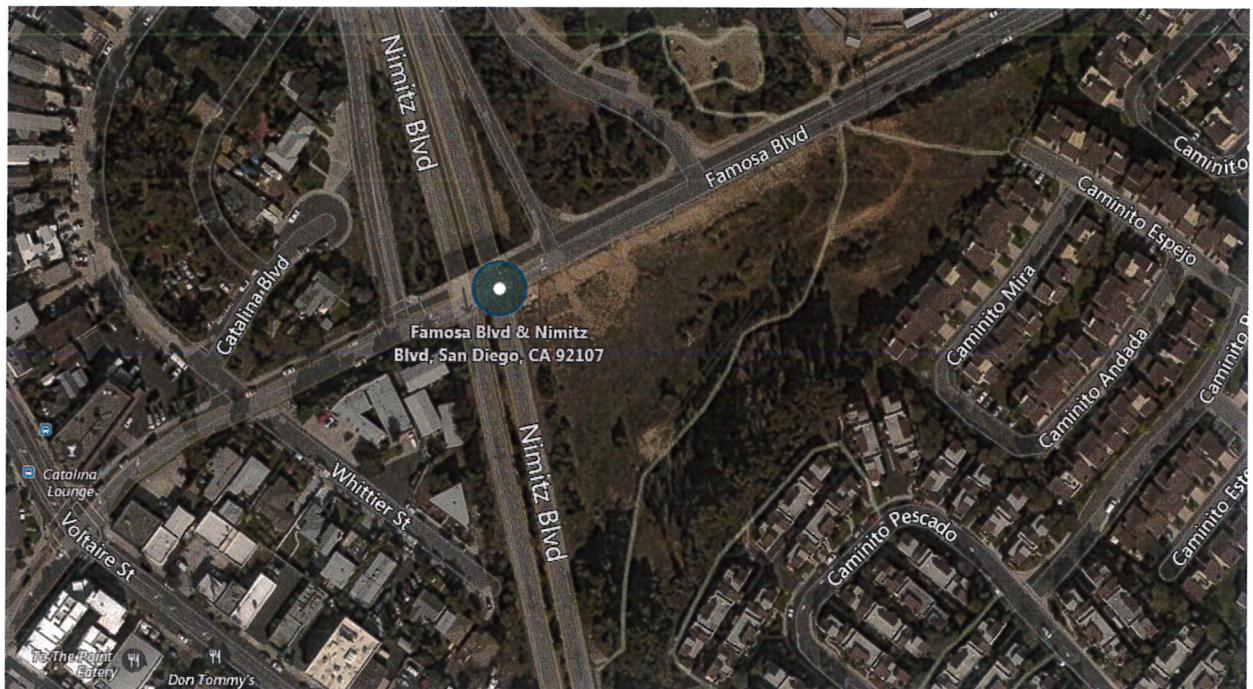
As Chair of the Peninsula Community Planning Board, I am conveying to you, as City Council Representative for the Peninsula Community, the consensus of the PCPB that the Peninsula Community is in **NEED** of affordable / work force housing.

As in most other San Diego communities, a significant unmet demand for affordable / work force housing exists in the Peninsula Community. However, unlike other San Diego Communities which have encouraged and supported the development of rental housing to accommodate work force families, the Peninsula has not been successful in attracting enough affordable rental housing to sustain our community over the long term. In fact, NO rental apartments specifically targeting low and moderate income families have been developed in the Peninsula since the PCPB Community Plan was updated in 1987, even though affordable / work force housing is recognized throughout the Community Plan as an important community objective.

For any community to be sustainable from generation to generation, it must maintain a housing stock that is available and affordable to families at all income levels. The Peninsula has always been a popular place to live and work for San Diego families of all income levels. However, work force families at low and moderate income levels often have to pay more than half of their household income on rent in order to live and work in the Peninsula Community.

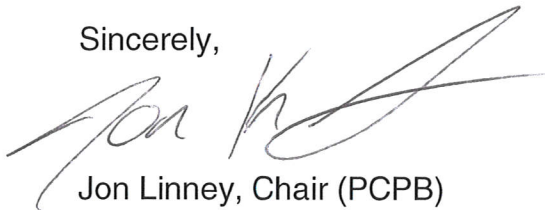
In alignment with the affordable housing goals outlined by the City of San Diego Smart Growth and Land Use Committee memorandum dated February 2017, recognizing Ballot Measure M which would increase the capacity to construct additional affordable rental housing in the City of San Diego, and intention to offer a diverse stock of housing options throughout the community, The Peninsula Community Planning Board hereby requests that City Council and the SDHC encourage and support the development of rental apartments in the Peninsula Community that would target low and moderate income work force families.

In addition to support of the development of rental apartments throughout the Peninsula Community that would target low and moderate income work force families, we would like to also reference the specific site bounded by Famosa Boulevard and Nimitz Boulevard as shown in the graphic below. This particular site is currently owned by the SDHC, is zoned for multi-family housing development, and would serve as a reasonable location for development of work force housing. The PCPB encourages this site for such development along with support for additional locations throughout the Peninsula Community.



Reference Map – Famosa Boulevard & Nimitz Boulevard, San Diego, CA 92107

Sincerely,



Jon Linney, Chair (PCPB)

Approved by an Action of the Peninsula Community Planning Board on 15 June 2017.